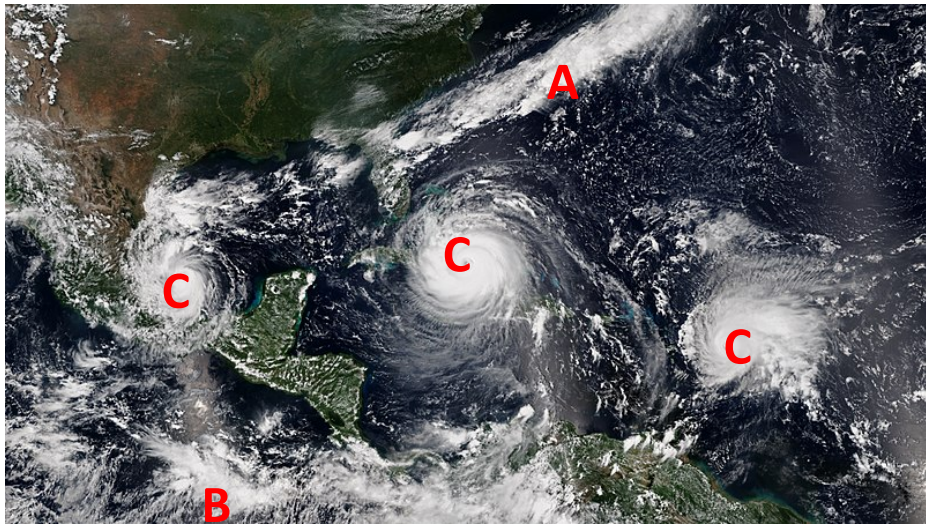


Student Activity

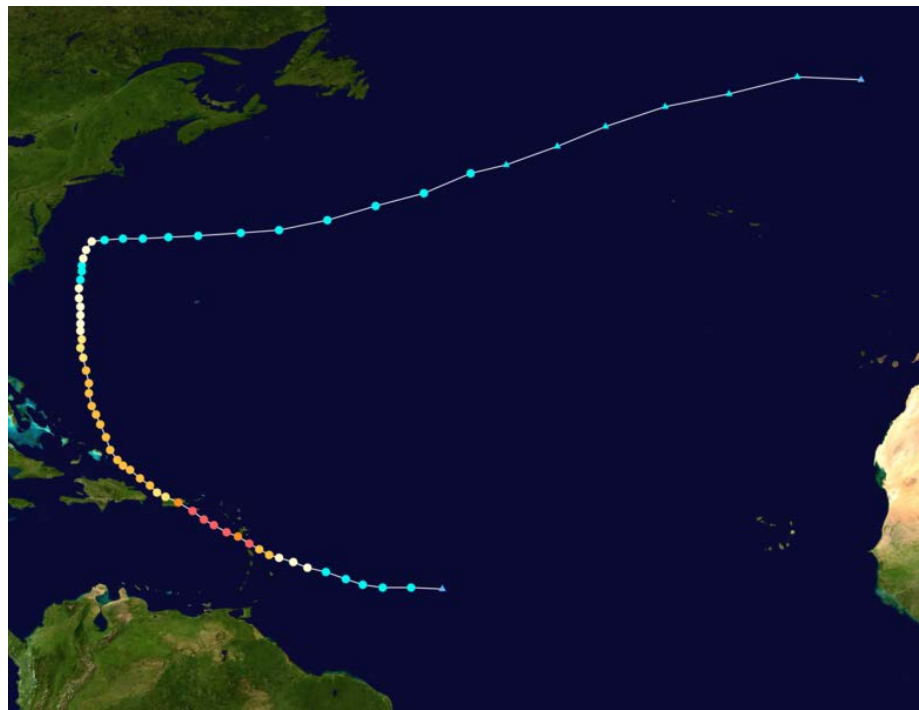
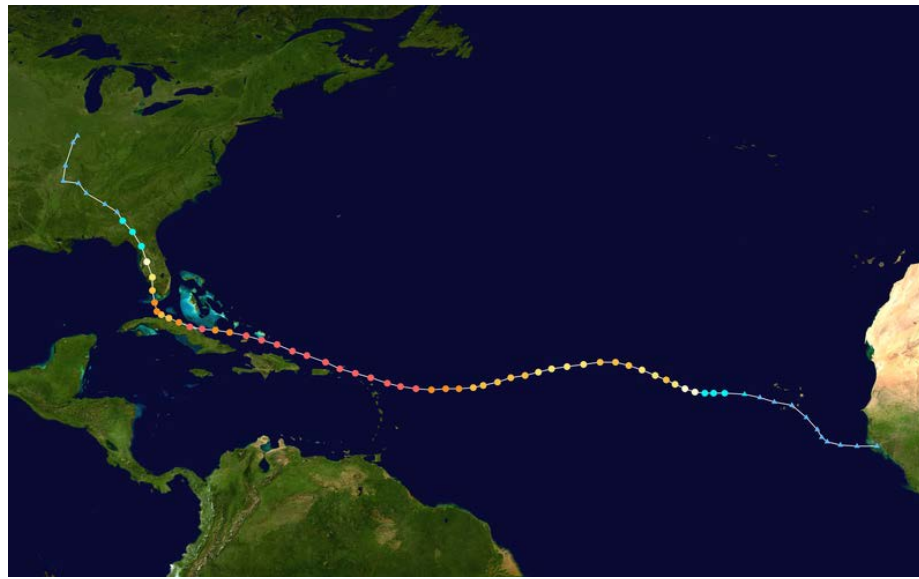
Continue from the last activity sheet

.....

11. Describe the distribution of cloud in the satellite image.



- A.
- B.
- C.



12. Describe the storm tracks for Hurricanes; Harvey; Irma & Maria. Use an atlas to help you

13. Even though there were three such strong hurricanes close together; why might it be fair to say the region had a near miss?

14. Use the information in the three tables to rank the three hurricanes using:

- a. Wind speed
- b. Fatalities
- c. Cost
- d. Air Pressure

15. In your opinion which was the worst disaster?

A. Explain your answer.

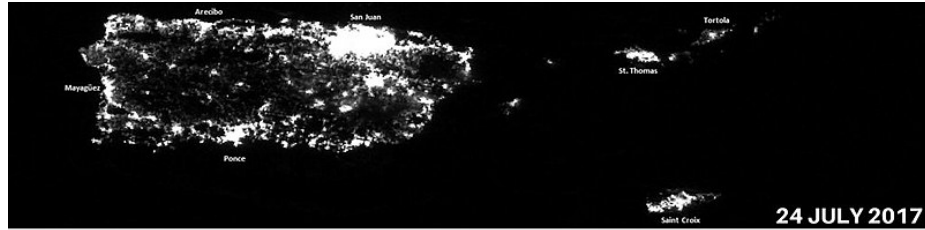
Hurricane Harvey	
Formed	August 17, 2017
Dissipated	September 3, 2017
Highest winds	1-minute sustained - 130 mph (215 km/h)
Lowest pressure	938 mbar
Fatalities	77 confirmed
Damage	Between \$70 billion USD (lowest) to \$180 billion USD (highest) – almost all in the USA.

Hurricane Irma	
Formed	August 30, 2017
Dissipated	September 16, 2017
Highest winds	1-minute sustained - 185 mph (295 km/h)
Lowest pressure	914 mbar
Fatalities	132 confirmed
Damage	At least \$63 billion USD.

Hurricane Maria	
Formed	September 16, 2017
Dissipated	October 3, 2017
Highest winds	1-minute sustained - 175 mph (280 km/h)
Lowest pressure	908 mbar
Fatalities	81 confirmed
Damage	> \$51.2 billion USD

16. Using the before and after photographs describe:

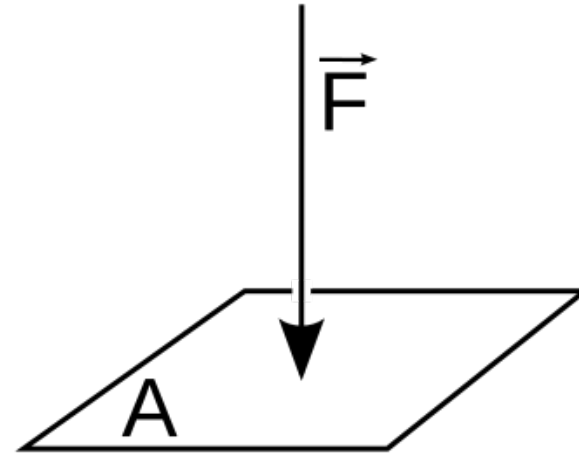
A. The Virgin Islands



B. Puerto Rico at night.



17. What does the word pressure mean? Use the sketch to help you to explain it.



18. Pressure is measured using a unit of a pascal (Pa) How much weight pushing down on a square metre would cause a pressure of a pascal?

- A. An adult male African elephant
- B. A bicycle
- C. An average year 5 pupil
- D. An apple

19. The more normal unit for air pressure is a unit called a millibar.

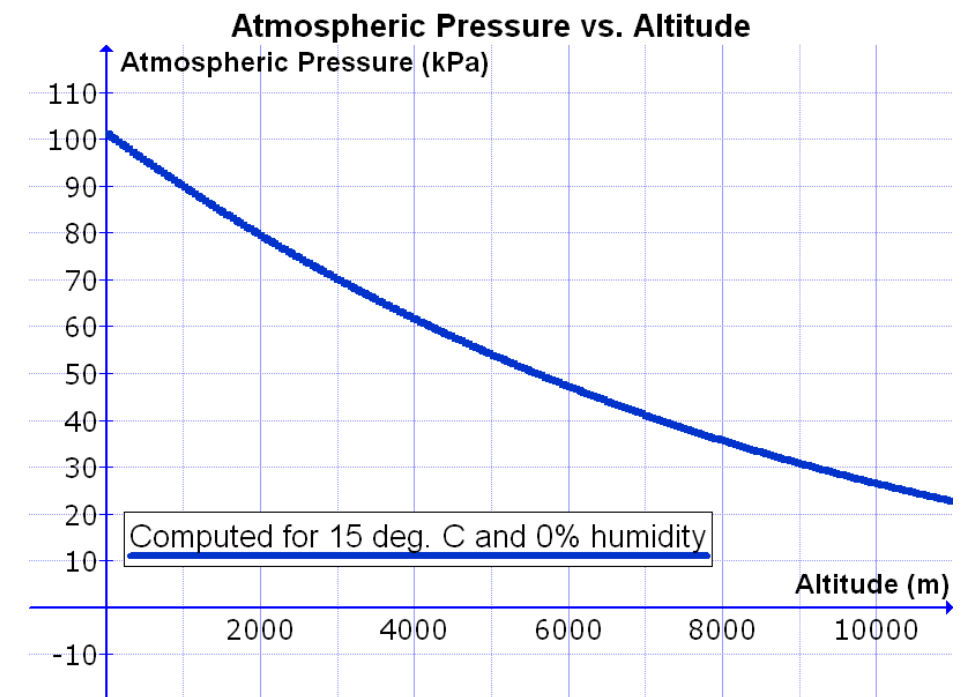
- A. How many Pascals make up a bar?
 - i. 100
 - ii. 10
 - iii. 1,000
 - iv. 10,000
 - v. 100,000

- B. How many millibars make up a bar?
 - i. 10
 - ii. 100
 - iii. 1,000
 - iv. 10,000
 - v. 100,000

20. What is normal atmospheric air pressure in millibars?

21. Use the graph below to describe what happens to air pressure as a person climbs from sea level to 10,000 metres.

- A. At 0 metres
- B. At 4,000 metres
- C. At 8,000 metres.



22. Why is there always a band of low air pressure close to the Equator?

- A. How can we see this on a satellite image?
- B. What kind of climate does this cause?
- C. What kind of ecosystem?

Conclusions

23. Describe three ways that air pressure is important.

- A.
- B.
- C.