

This map provides a summary of the SMP2 policies which are likely to attract public funding. For further details, including recommendations with respect to private defences please refer to the SMP2 policy statement.



Swansea and Carmarthen Bay Coastal Engineering Group
Lavernock Point to St Ann's Head SMP Review
Preferred policies: Vale of Glamorgan

- Legend**
- Policy unit extents
 - Policy units
 - Policy scenario areas
 - Scheduled Monuments
 - International Nature Conservation Designations
 - National Nature Conservation Designations
 - Area currently at risk from flooding during the extreme flood event, 0.1% annual probability of occurrence (1 in 1000yr return period).
- It is predicted that the probability and extent of flood risk will increase over time as a result of climate change. However, detailed assessments are outside the scope of the SMP.

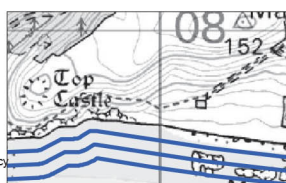
0 0.5 1 2 3 4 Kilometres

This map is based upon Ordnance Survey material with the permission of Ordnance Survey on behalf of the Controller of the Map. The Map is Crown Copyright. Unauthorised reproduction infringes Crown copyright and may lead to prosecution or civil proceedings. Cartographic material: Ordnance Survey, Licence No. 100023377, 3089

Job Number: DCSSMP
Drawn By: JSM

- Shoreline management policies**
- No active intervention
 - Managed realignment
 - Hold the line
 - Advance the line

Boxes showing cliff erosion estimates represent predicted erosion from the shoreline position in year 0. They are only shown where there is a policy of NAI and cliff erosion is the main risk.



Policy lines are not indicative of current shoreline position.

Lines represent the preferred shoreline management policy for each location (most landward line is the first epoch).

Up to 20 years
20 - 50 years
50 to 100 years

